

Living d.o.o.  
Prvomajska 39  
5000 Nova Gorica  
Slovenija

Tel.: +386 (0)5 333 38 10  
+386 (0)5 333 30 70  
Fax.: +386 (0)5 333 30 71  
e-mail: living@siol.net



## Peskalni stroji Shotblast machines



### STROJI Z VISEČO KLJUKO

Obdelovanci visijo na kljuki, ki se vrta in oscilira med peskanjem za določen čas.

### BATCH HOOK MACHINES

Workpieces are hanged on hooks that rotate or rotate and oscillate in blasting position for a preset time.

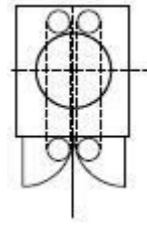


Living d.o.o.  
Prvomajska 39  
5000 Nova Gorica  
Slovenija

Tel.: +386 (0)5 333 38 10  
+386 (0)5 333 30 70  
Fax.: +386 (0)5 333 30 71  
e-mail: living@siol.net

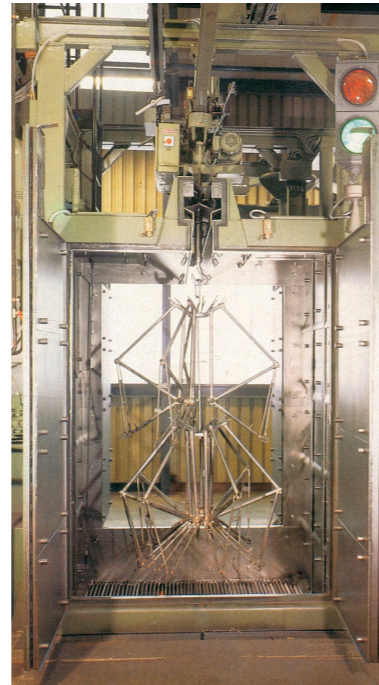
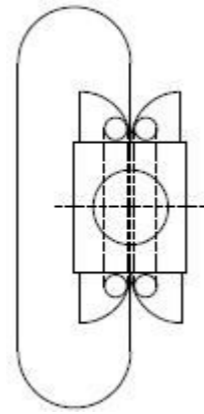
## Izvedba stroja – Peskalna komora – Viseči transporter

### Execution of the machine - Blasting compartment - Overhead monorail



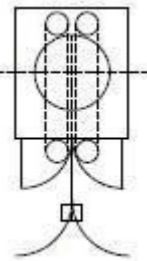
Stroj izvedbe B s šaržirno napravo.  
Machine execution B with loading device.

- C) Obdelovanci visijo na ročnem vozičku.
- D) Obdelovanci visijo električnem vozičku (dvigalu).
- A) Load hanging on manually operated trolley.
- B) Load hanging on el. operated trolley (hoist).



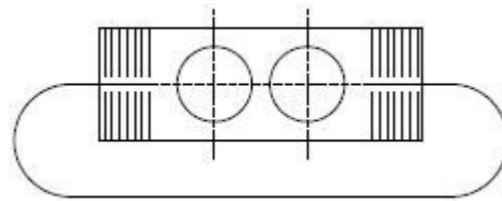
Stroj tipa B.  
Machine type B.

- A) Obdelovanci visijo na ročnem vozičku.
- B) Obdelovanci visijo električnem vozičku (dvigalu).
- A) Load hanging on manually operated trolley
- B) Load hanging on electrically operated trolley (hoist).



Stroj tipa A.  
Machine type A.

- A) Obdelovanci visijo na ročnem vozičku.
- B) Obdelovanci visijo električnem vozičku (dvigalu).
- C) Ročna ali električna kretnica.
- A) Load hanging on manually operated trolley
- B) Load hanging on el. Operated trolley (hoist)
- C) Diverter operated manually or pneumatically

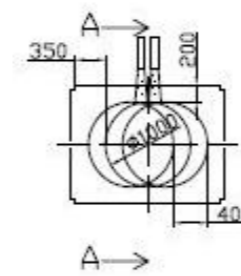


Stroj tipa A.  
Dve poziciji za peskanje.  
Machine type A.  
Two blasting positions.

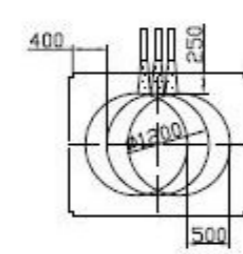
- A) Obdelovanci obešeni na visečem transporterju
- B) Možnost več pozicij za peskanje. Stroj opremljen s tesnilnimi zavesami.
- A) Load hanging on indexing powered monorail conveyor
- B) One or more blasting positions with inlet and outlet sealing vestibules

## Mere prostora za peskanje Workpiece dimensions

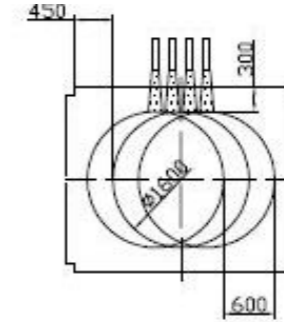
BM 1000 x 1200



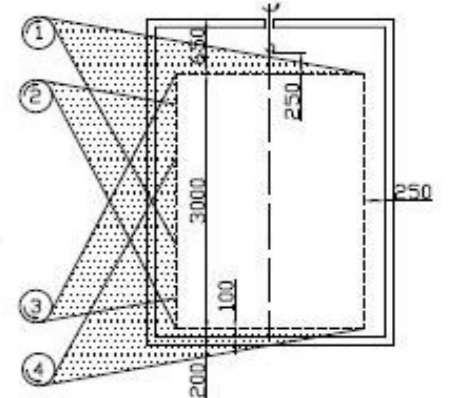
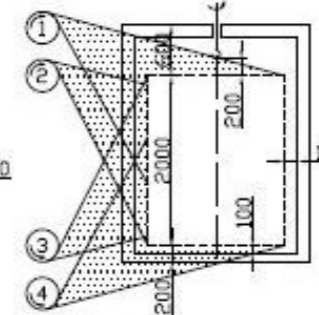
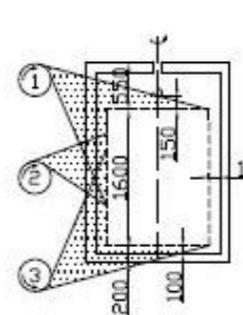
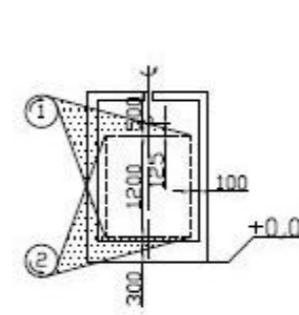
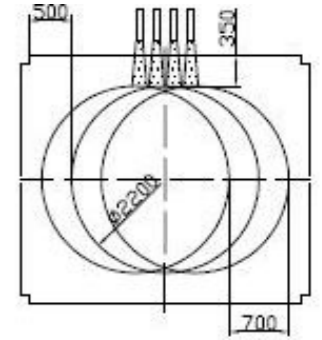
BM 1200 x 1600



BM 1600 x 2000



BM 2200 x 3000



### Nosilnost vozička

Do 5.000 kg z električnim vozičkom.

Do 1.500 kg z ročnim vozičkom.

Do 1.500 kg na visečem transporterju.

### Turbine 380 D/T ali 320 D

- 380 D z direktnim pogonom moči od 11 do 30 kW.

- 380 T z vretenjakom moči od 11 do 45 kW.

- 320 D z direktnim pogonom moči od 5,5 do 11 kW.

### Hook load

Up to 5.000 kg with electrically operated trolley and hoist

Up to 1.500 kg with hooks hanging on manually operated trolleys

Up to 1.500 kg with powered overhead conveyor

### Throwing wheels 380 D/T, alternatively 320 D

- 380 D Directly driven powered by motors from 11 up to 30 kW.

- 380 T Indirectly driven by spindle powered by motors from 11 up to 45 kW.

- 320 D Directly driven powered by motors from 5,5 up to 11 kW.

### Separatorji peska

- Zračni separator.

- Zračni separator s sitom

- Magnetni separator

### Transport peska

- Polžni transporter - elevator

- Vibracijski transporter - elevator

### Dodatna oprema

- Avtomatsko doziranje peska

### Nakladalne naprave

### Abrasive separators

- Cascade air wash type

- Rotary screen air wash

- Rotary screen magnetic air wash

### Abrasive conveying

- Screw conveyor - bucket elevator

- Vibrating conveyor - bucket elevator

### Auxiliary equipment

- Automatic abrasive replenisher

### Loading devices